

Mayfair Shopping Center

10-2020 JERICHO TURNPIKE | COMMACK, NY 11725



2.2M visits annually
+19% YoY increase
6.63 visit frequency
49 min avg. duration

*Property Data by Placer.ai



Available Spaces

2,430 SF; 2,971 SF;
3,480 SF - 2nd gen salon; 12,800 SF - former Rite Aid
21,000 SF

Property Highlights

- **221,651 SF Community Center** with **2.2 Million Annual Visits***
- **Anchored by Top-Ranked Grocer Lidl** and **PGA TOUR Superstore**
- **+19% YoY Increase in Monthly Traffic** due to strategic leasing and store improvements
- **New Additions:** J.Crew Factory is now open! Sephora and Champions Martial Arts (both recently opened), and Mimi's Coffee & Bubble Tea (coming soon)
- **Successful Tenant Mix** featuring National Retailers and Restaurants
- **Located in Upscale Suffolk County** with a **Typical Visitor Income of \$200K***
- **Prime Location on Jericho Turnpike**, near Sunken Meadow State Parkway

Retailers

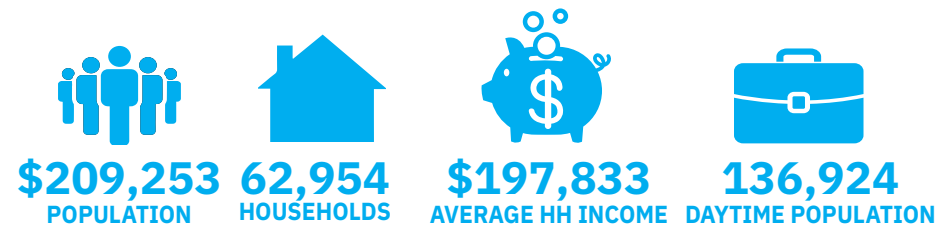


Average Daily Traffic

38,223 Jericho Turnpike*
29,195 Sunken Meadow State Parkway*
33,690 Commack Road, CR 4*

Demographics

5-mile radius



Source: sitesusa.com

Mayfair Shopping Center

10-2020 JERICHO TURNPIKE | COMMACK, NY 11725

LEVIN
MANAGEMENT

PHOTO GALLERY



**J.Crew Factory,
PGA Tour Superstore,
Champions Martial Arts and
Sephora are now open!**

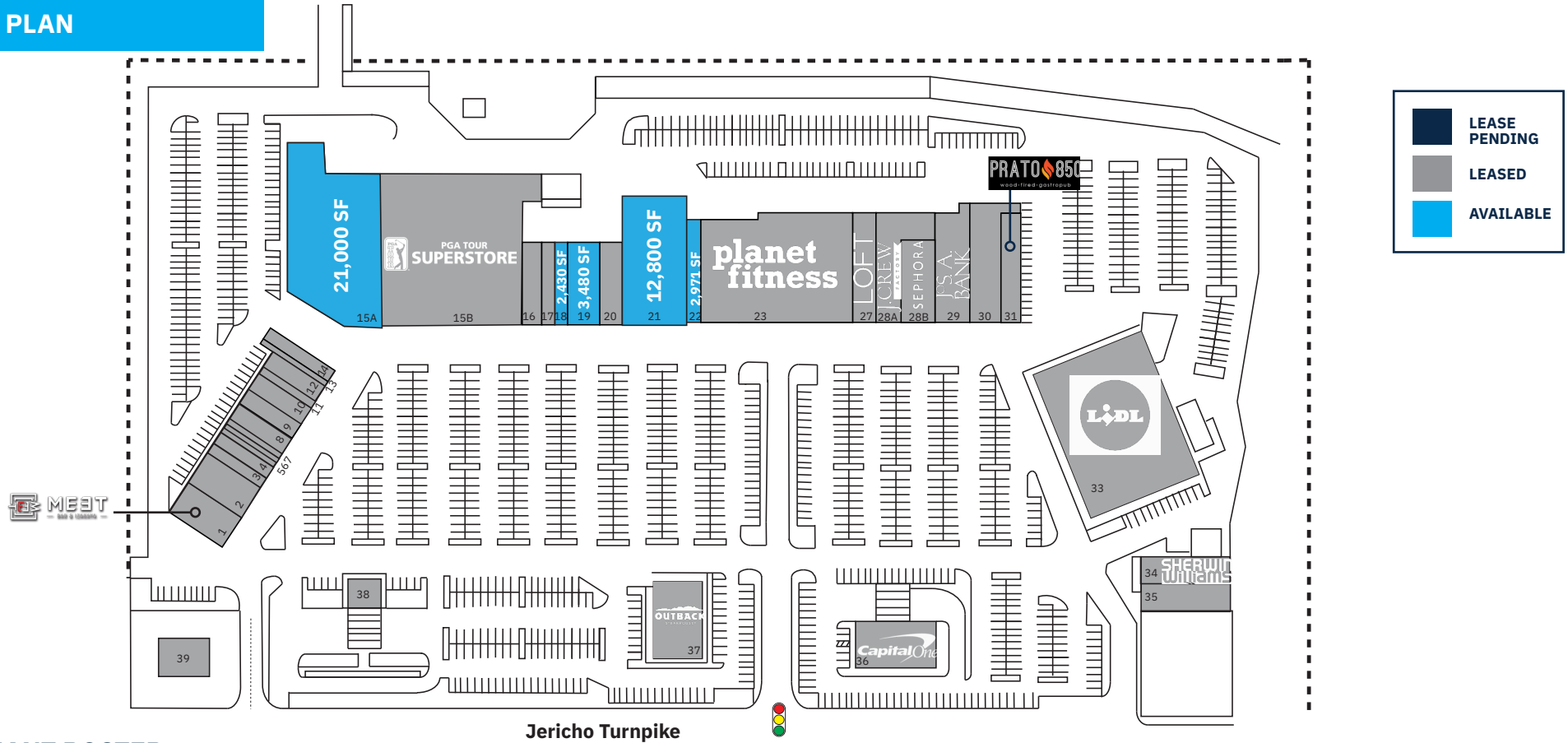
**Mimi's Coffee & Bubble Tea
coming soon!**



Mayfair Shopping Center

10-2020 JERICHO TURNPIKE | COMMACK, NY 11725

SITE PLAN



TENANT ROSTER

1	Meet Izakaya Ramen Bar	3,749 SF	10	Mr. Cheapo's	1,360 SF	18	Available	2,430 SF	29	Jos. A. Bank	5,064 SF
2	Bagel Toasterie	3,320 SF	11	H&R Block	800 SF	19	Available - 2nd gen salon	3,480 SF	30	JBBQ Wok & Dumpling	6,507 SF
3	Champions Martial Arts	1,320 SF	12	The Crushed Olive	1,280 SF	20	Music & Arts	2,500 SF	31	Prato 850	3,380 SF
4	Tropical Smoothie	1,280 SF	13	Barber	960 SF	21	Available - former Rite Aid	12,800 SF	33	Lidl	30,808 SF
5	Queen Bee Nail Salon	800 SF	14	Gamestop	2,000 SF	22	Available	2,971 SF	34	Sherwin Williams	4,975 SF
6	Excel Shoe Repair	500 SF	15A	Available	21,000 SF	23	Planet Fitness	19,865 SF	35	Mayfair Liquors	3,894 SF
7	Cleaners	890 SF	15B	PGA Tour Superstore	39,225 SF	27	Loft	5,700 SF	36	Capital One	5,500 SF
8	D'Ore Jewelers	1,200 SF	16	Northwell Go Health	2,500 SF	28A	J. Crew Factory	6,762 SF	37	Outback Steakhouse	6,192 SF
9	Mimi's Coffee & Bubble Tea <i>Opening Soon!</i>	1,200 SF	17	Original Brooklyn Pizza	1,400 SF	28B	Sephora	4,786 SF	38	M&T Bank	6,000 SF
									39	Verizon Wireless	2,500 SF

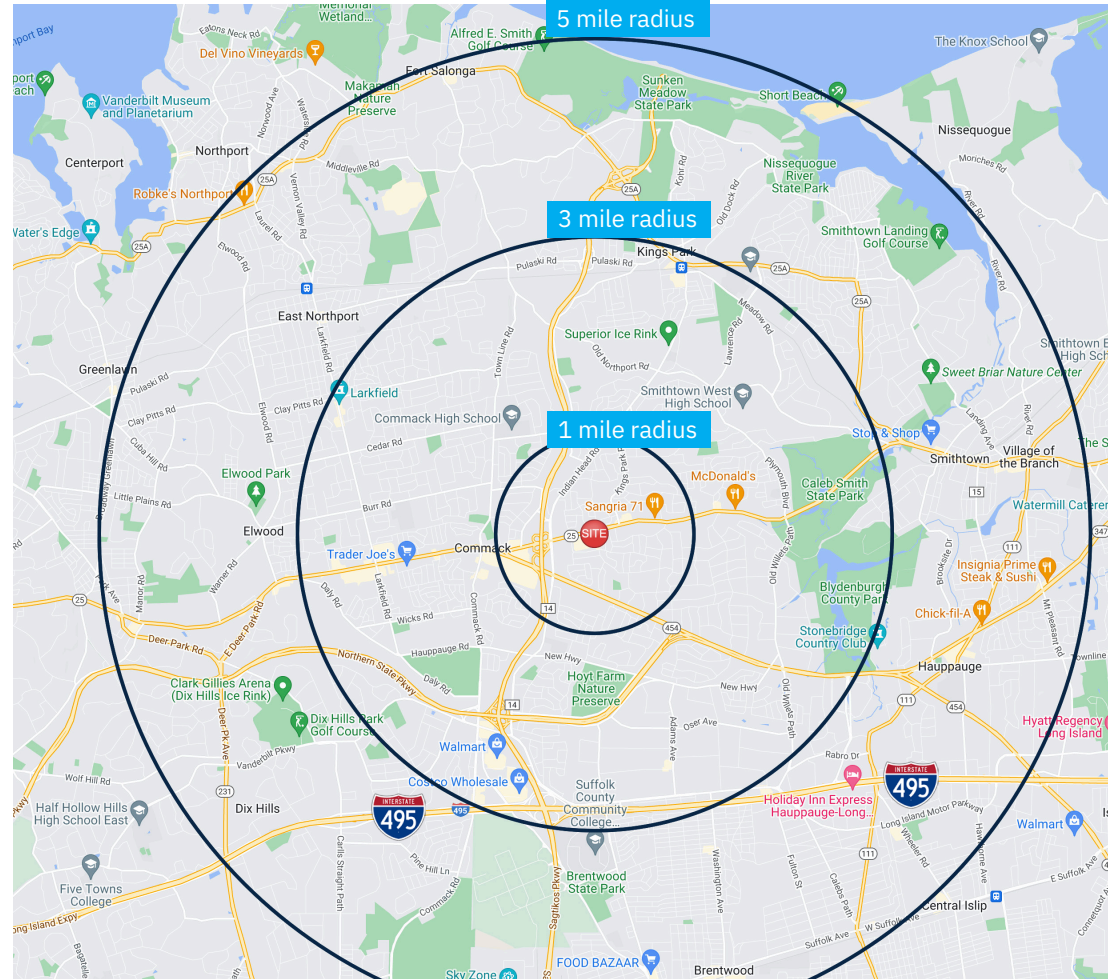
Mayfair Shopping Center

10-2020 JERICHO TURNPIKE | COMMACK, NY 11725

DEMOGRAPHICS

2010-2020 Census, 2024 Estimates	1 mile radius	3 mile radius	5 mile radius
Population	11,170	69,925	197,833
Households	3,745	23,138	62,954
Average Household Income	\$199,263	\$215,556	\$209,253
Projected Average Household Income (2028)	\$213,062	\$233,451	\$231,132
Median Household Income	\$173,607	\$168,095	\$163,254
Total Businesses	567	4,332	9,947
Total Employees	5,158	58,379	115,356
Daytime Population	6,257	66,740	136,924
Total Annual Household Expenditure	\$443.22 M	\$2.94 B	\$7.8 B
HH Income \$200K or more	1,502	8,854	22,620
College Degree + (Bachelor Degree or Higher)	4,404	27,213	65,825

Source: sitesusa.com



Mayfair Shopping Center

10-2020 JERICHO TURNPIKE | COMMACK, NY 11725

LEVIN
MANAGEMENT

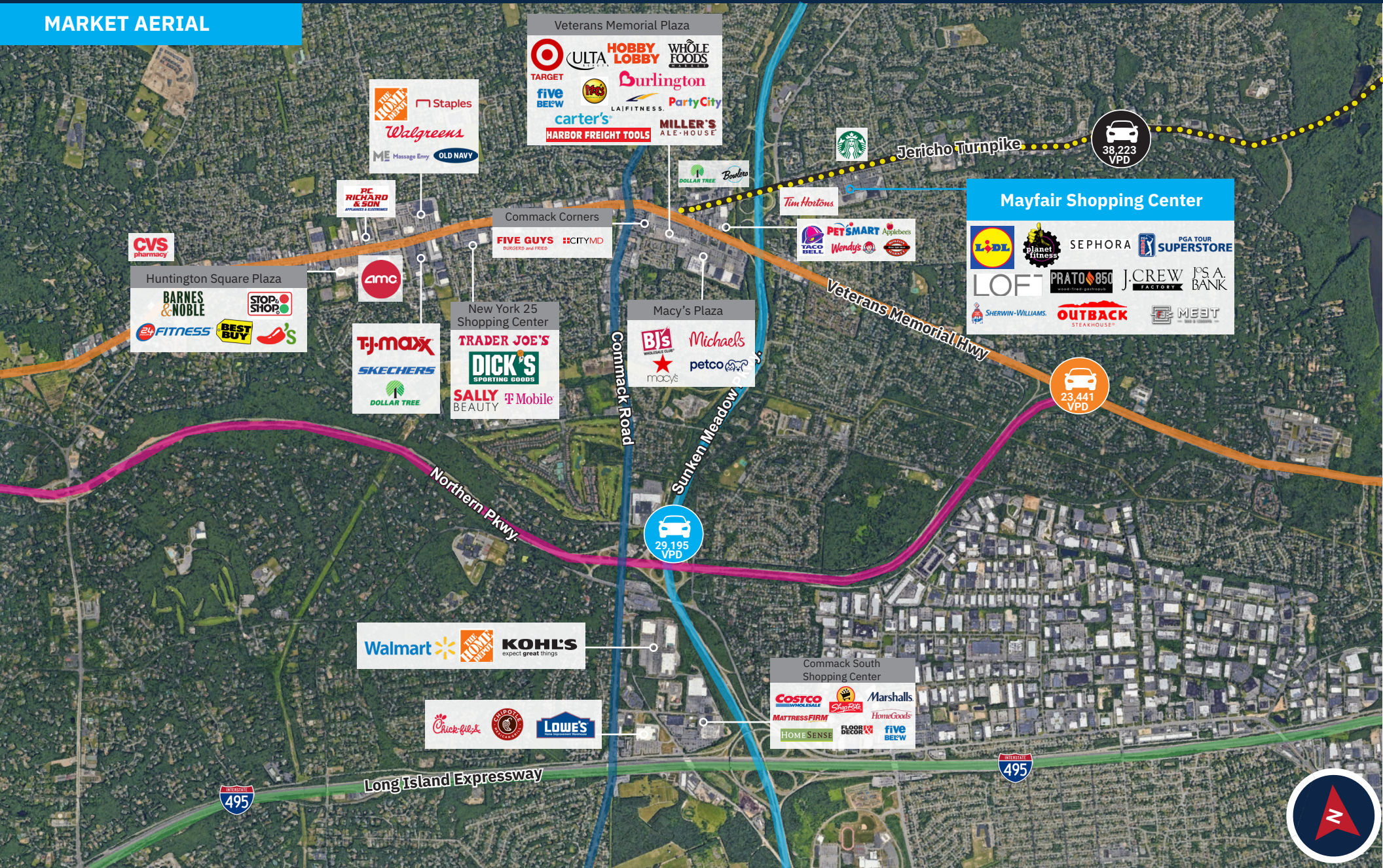
CLOSE-UP AERIAL



Mayfair Shopping Center

10-2020 JERICHO TURNPIKE | COMMACK, NY 11725

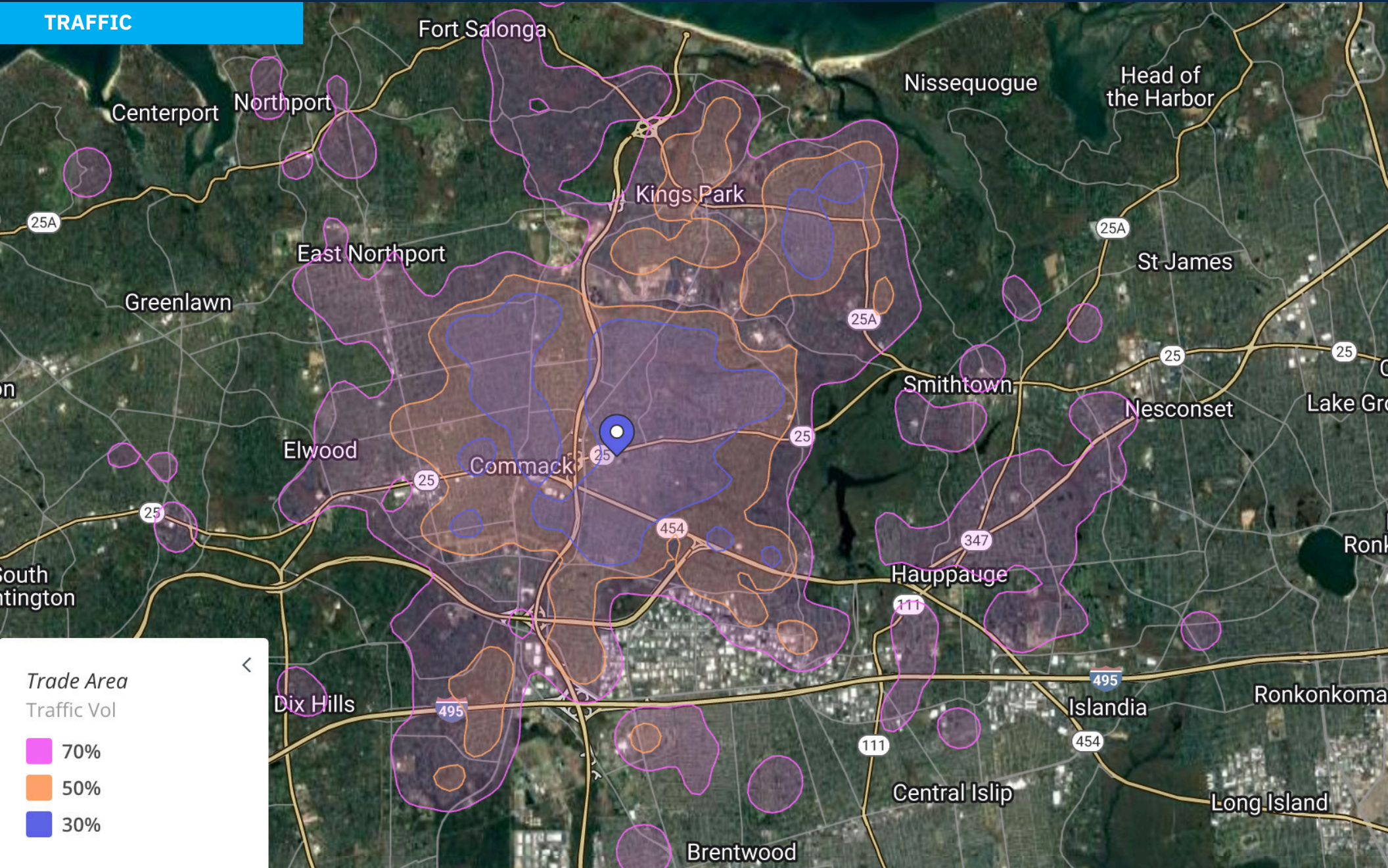
MARKET AERIAL



Mayfair Shopping Center

10-2020 JERICHO TURNPIKE | COMMACK, NY 11725

TRAFFIC



CONTACT EXCLUSIVE AGENT

E.J. MOAWAD

Senior Leasing Representative

t. 908.226.5266 m. 201.705.3721

emoawad@levinmgt.com



Main Office

975 US Highway 22
North Plainfield, NJ 07060
800.488.0768
levinmgt.com | 70 YEARS