

# Mayfair Shopping Center

10-2020 JERICHO TURNPIKE | COMMACK, NY 11725

LEVIN  
MANAGEMENT



2.3M visits annually  
6.49 visit frequency  
47 min avg. duration

\*Property Data by Placer.ai



## Available Spaces

2,000; 2,430; 3,480 SF - 2nd gen salon

## Property Highlights

- 221,651 SF Community Center with 2.3 Million Annual Visits\*
- Anchored by Top-Ranked Grocer Lidl and PGA TOUR Superstore
- Mayfair Shopping Center had 2.3 million visitors in 2024, up 7.6% from 2023 (YoY) and 18% from 2022 (Yo2Y)
- New Additions: J.Crew Factory and Sephora, Gap Factory, Kids Empire, My Gym and Mimi's Coffee & Bubble Tea (coming soon!)
- Successful Tenant Mix featuring National Retailers and Restaurants
- Located in Upscale Suffolk County with a Typical Visitor Income of \$200K\*
- Prime Location on Jericho Turnpike, near Sunken Meadow State Parkway

## Retailers



## Average Daily Traffic

38,223 Jericho Turnpike\*

29,195 Sunken Meadow State Parkway\*

33,690 Commack Road, CR 4\*

## Demographics

5-mile radius



**\$209,253**  
POPULATION



**62,954**  
HOUSEHOLDS



**\$197,833**  
AVERAGE HH INCOME



**136,924**  
DAYTIME POPULATION

Source: sitesusa.com

# Mayfair Shopping Center

10-2020 JERICHO TURNPIKE | COMMACK, NY 11725

**LEVIN**  
MANAGEMENT

## PHOTO GALLERY



**Added Retailers**  
J.Crew Factory,  
PGA Tour Superstore,  
Champions Martial Arts and  
Sephora!

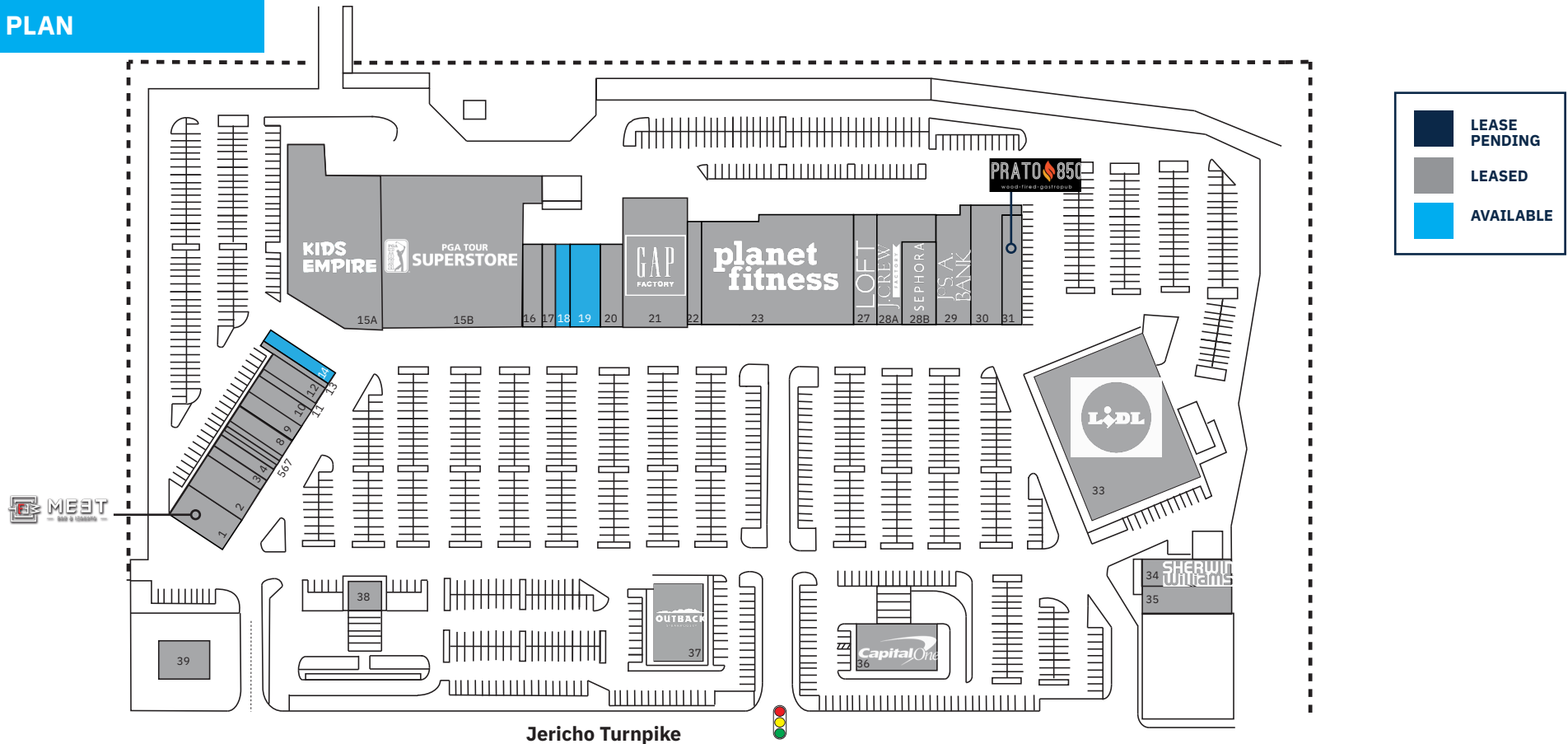
**Gap Factory, Kids Empire,  
My Gym and  
Mimi's Coffee & Bubble Tea  
coming soon!**



# Mayfair Shopping Center

10-2020 JERICHO TURNPIKE | COMMACK, NY 11725

## SITE PLAN



## TENANT ROSTER

1	Meet Izakaya Ramen Bar	3,749 SF	10	Mr. Cheapo's	1,360 SF	18	Available	2,430 SF	29	Jos. A. Bank	5,064 SF
2	Bagel Toasterie	3,320 SF	11	H&R Block	800 SF	19	Available - 2nd gen salon	3,480 SF	30	JBBQ Wok & Dumpling	6,507 SF
3	Champions Martial Arts	1,320 SF	12	The Crushed Olive	1,280 SF	20	Music & Arts	2,500 SF	31	Prato 850	3,380 SF
4	Tropical Smoothie	1,280 SF	13	Barber	960 SF	21	Gap Factory <i>Opening Soon!</i>	12,800 SF	33	Lidl	30,808 SF
5	Queen Bee Nail Salon	800 SF	14	Available	2,000 SF	22	My Gym <i>Opening Soon!</i>	2,971 SF	34	Sherwin Williams	4,975 SF
6	Excel Shoe Repair	500 SF	15A	Kids Empire <i>Opening Soon!</i>	21,000 SF	23	Planet Fitness	19,865 SF	35	Mayfair Liquors	3,894 SF
7	Cleaners	890 SF	15B	PGA Tour Superstore	39,225 SF	27	Loft	5,700 SF	36	Capital One	5,500 SF
8	D'Ore Jewelers	1,200 SF	16	Northwell Go Health	2,500 SF	28A	J.Crew Factory	6,762 SF	37	Outback Steakhouse	6,192 SF
9	Mimi's Coffee & Bubble Tea <i>Opening Soon!</i>	1,200 SF	17	Original Brooklyn Pizza	1,400 SF	28B	Sephora	4,786 SF	38	M&T Bank	6,000 SF
									39	Verizon Wireless	2,500 SF

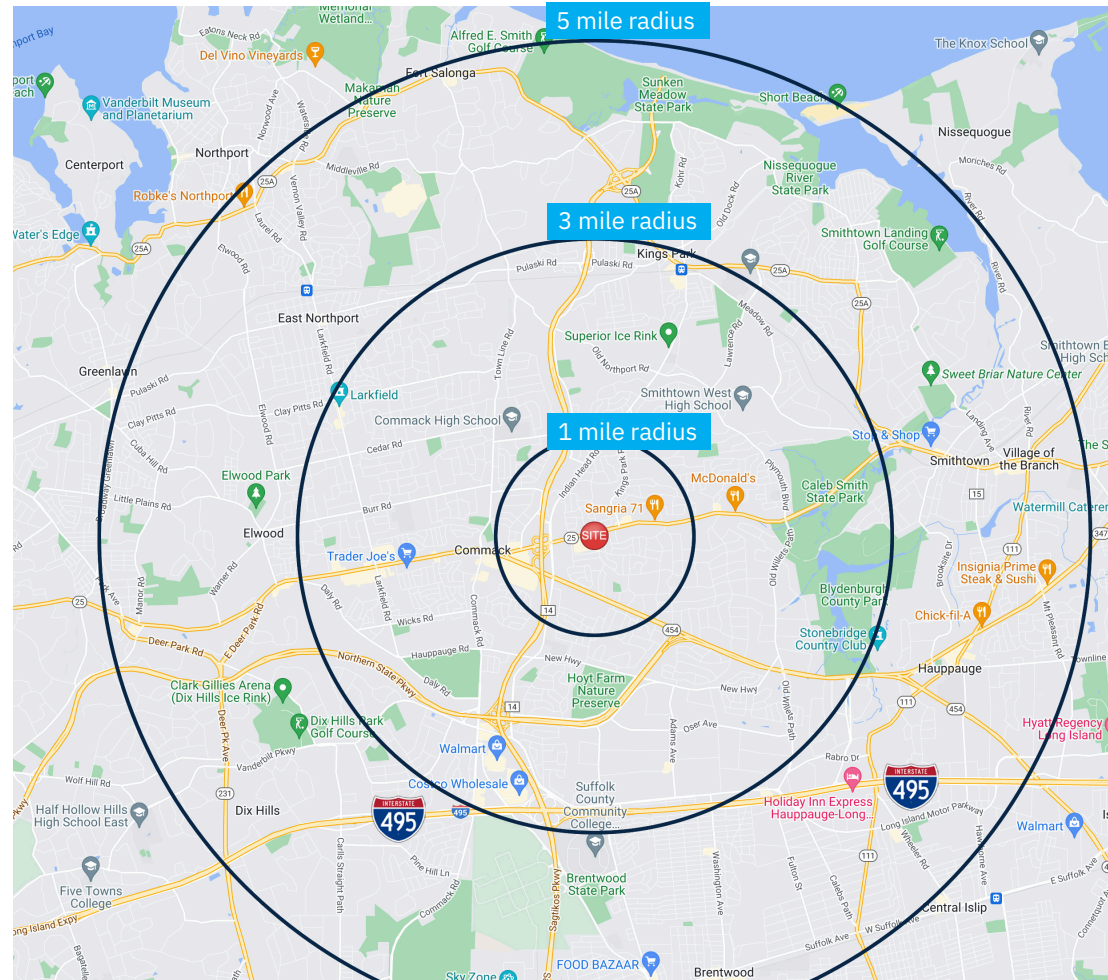
# Mayfair Shopping Center

10-2020 JERICHO TURNPIKE | COMMACK, NY 11725

## DEMOGRAPHICS

2010-2020 Census, 2024 Estimates	1 mile radius	3 mile radius	5 mile radius
Population	11,170	69,925	197,833
Households	3,745	23,138	62,954
Average Household Income	\$199,263	\$215,556	\$209,253
Projected Average Household Income (2028)	\$213,062	\$233,451	\$231,132
Median Household Income	\$173,607	\$168,095	\$163,254
Total Businesses	567	4,332	9,947
Total Employees	5,158	58,379	115,356
Daytime Population	6,257	66,740	136,924
Total Annual Household Expenditure	\$443.22 M	\$2.94 B	\$7.8 B
HH Income \$200K or more	1,502	8,854	22,620
College Degree + (Bachelor Degree or Higher)	4,404	27,213	65,825

Source: sitesusa.com



# Mayfair Shopping Center

10-2020 JERICHO TURNPIKE | COMMACK, NY 11725

**LEVIN**  
MANAGEMENT

## CLOSE-UP AERIAL

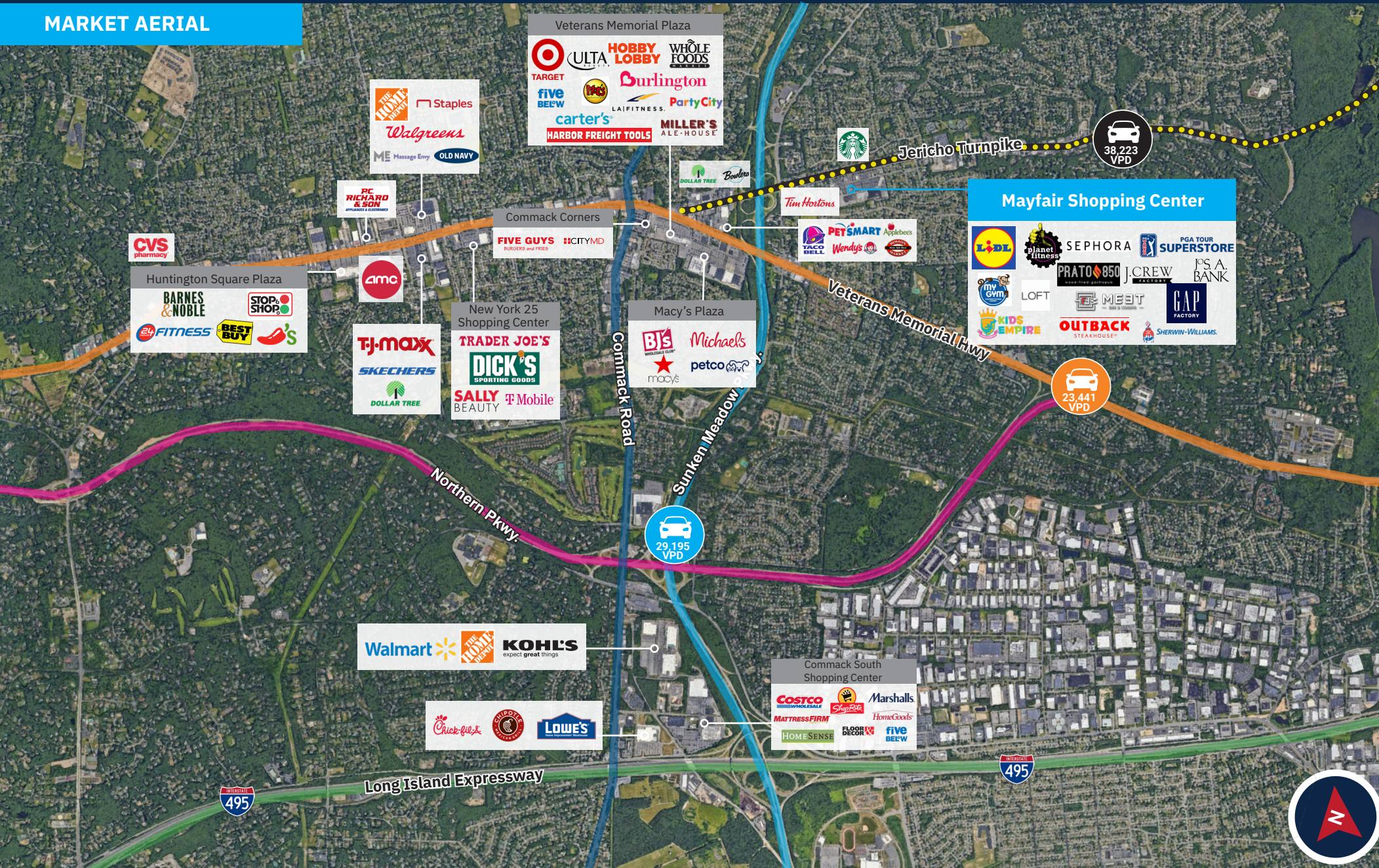


# Mayfair Shopping Center

10-2020 JERICHO TURNPIKE | COMMACK, NY 11725

**LEVIN**  
MANAGEMENT

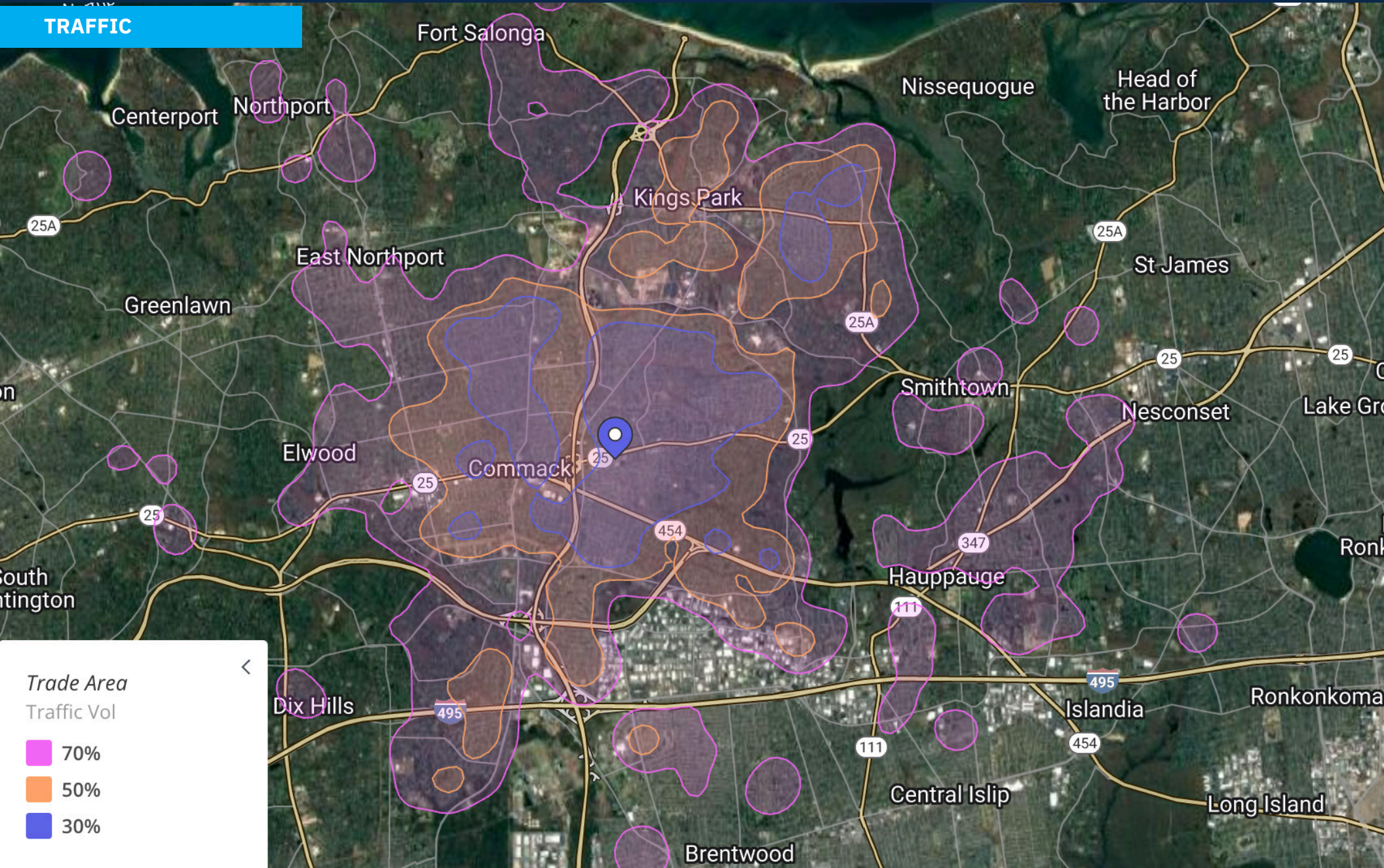
## MARKET AERIAL



# Mayfair Shopping Center

10-2020 JERICHO TURNPIKE | COMMACK, NY 11725

## TRAFFIC



## CONTACT EXCLUSIVE AGENT

**E.J. MOAWAD**

**Senior Leasing Representative**

**t. 908.226.5266 m. 201.705.3721**

**emoawad@levinmgt.com**



### **Main Office**

975 US Highway 22  
North Plainfield, NJ 07060  
800.488.0768  
**levinmgt.com | 70 YEARS**